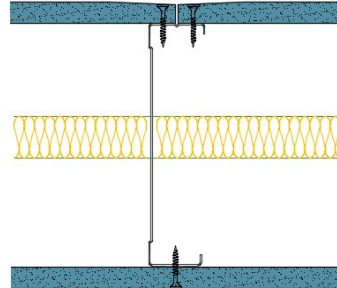


146-S-53(25) - SPEEDLINE System Data Sheet - Version V1 (24-10-23)

SPEEDLINE 146mm 'C' Stud Partition @600mm Ctrs, with Siniat GTEC 12.5mm dB Board each side, 25mm APR



System Performance Breakdown

Fire Resistance:

BS476 Part 22:1987:

Test Ref & Date or Applied Ref & Report:

Max Height:

Thickness:

Duty Grade: BS 5234: Part 2:1992:

Sound Insulation:

30/30 Minutes (Integrity/Insulation).

BRE 269826 - BRE Report P102396-1011C

Refer to Speedline Specification Clause

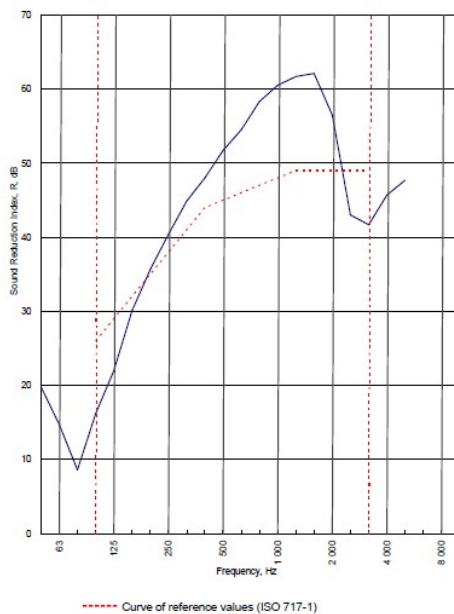
173 mm. (At Base Track, Excluding Finishes)

Medium - Annexes A-F

45 R_w dB, Date Tested or Assessed Against - 70-S-53(25)

Test Code:
H17508AA
Test Date:
28/07/2011

Freq. Hz	R dB
50	19.8
63	14.7
80	8.6
100	16.2
125	22.0
160	30.1
200	35.7
250	40.4
315	44.9
400	48.0
500	51.7
630	54.5
800	58.3
1 000	60.5
1 250	61.7
1 600	62.1
2 000	56.5
2 500	43.0
3 150	41.7
4 000	45.7
5 000	47.7
6 300	
8 000	
10 000	



Rating according to BS EN ISO 717-1:1997	R_w (C;Ctr) = 45 (-4;-10) dB		
Evaluation based on laboratory measurement results obtained by an engineering method:	$C_{50-3150} = -7$ dB	$C_{50-5000} = -6$ dB	$C_{100-5000} = -3$ dB
	$C_{50-3150} = -17$ dB	$C_{50-5000} = -17$ dB	$C_{100-5000} = -10$ dB

TESTED AT ONE OF THE UKAS ACCREDITED LABORATORIES BELOW

- B.T.C (H-Ref on Graph)
- B.R.E
- AIRO
- S.R.L

Customer: Metsec plc Hepsec Division

BTC 17508A: Page 9 of 11



SPEEDLINE Drywall Systems, Adsetts House, 16 Europa View, Sheffield Business Park, Sheffield, S9 1XH.

Tel: 0114 231 8030.

Email: enquiries@speedlinedrywall.co.uk

(As per the requirements set out in ISO/IEC 17025:2017 regarding test data the results stated have been carried out by voestalpine Metsec plc as part of the contract to supply Speedline Metal Sections to SIG Plc)